



ALASKA DIVISION OF HOMELAND SECURITY & EMERGENCY MANAGEMENT



Daily Situation Report 26-026 • January 26, 2026

Toll-Free 1.800.478.2337

Anchorage Area 907.428.7000

SEOC 907.428.7100

<u>SEOC Preparedness Level</u> Level 1-Routine Operations	http://ready.alaska.gov	<u>Alaska Military Installation Force Protection Level:</u> FPCON Bravo
<u>NTAS Bulletin</u> There are no current advisories https://www.dhs.gov/national- terrorism-advisory-system	<u>Maritime Security (MARSEC)</u> Level:1 Minimum Appropriate Security Measures	

(Significant changes from previous situation reports are red.)

Significant Issues:

No new issues

Division of Homeland Security and Emergency Management Public Information:

For current press releases, see: <https://ready.alaska.gov/PublicInformation/PressReleases>

Department of Health (DOH):

For current information, see: <https://health.alaska.gov/en/>

Travel Alerts and Conditions:

For current driving conditions, dial 511 or visit: <https://511.alaska.gov/>

Barry Arm Landslide / Tsunami Risk:

For the latest information on the Barry Arm Landslide and Tsunami risk, click here:

<https://dggs.alaska.gov/hazards/barry-arm-landslide.html>

Earthquakes:

United States Geological Service (USGS) Earthquake Information:

<https://www.usgs.gov/programs/earthquake-hazards>

National Tsunami Warning Center: <https://tsunami.gov/>

Alaska Volcanoes:

Great Sitkin Alert Level: **Watch** and Aviation Color Code: **Orange**

Shishaldin Alert Level: **Advisory** and Aviation Color Code: **Yellow**

For Alaska Volcano updates, go to: <https://www.avo.alaska.edu/>

Air Quality Index (AQI) Advisories:

For the most up-to-date Air Quality Index Advisories:

Fairbanks Zone - Stage 1

Ends: 2026|01|26|14|00

North Pole Zone - Stage 2

Ends: 2026|01|26|14|00 To see the stage go to

<https://dec.alaska.gov/Applications/Air/airtoolsweb/Advisories>

Spills of Oil and Hazardous Substances:

Western North Slope (WNS) adjacent to a gravel road about 6.5 miles northwest of Nuiqsut.

Rig 26, the maximum potential product on board was 8,400 gallons of diesel, 1,930 gallons hydraulic oil, and 85 gallons of ethylene glycol. Because diesel was used to fuel the rig's mobilization, it is estimated that a significant portion of the diesel had been consumed prior to Rig 26 leaving the roadway. Fuel volumes in the diesel tanks were measured approximately 30 minutes prior to the incident indicating that approximately 4,000 gallons were on board. Evidence of a diesel spill has been confirmed by emergency responders.

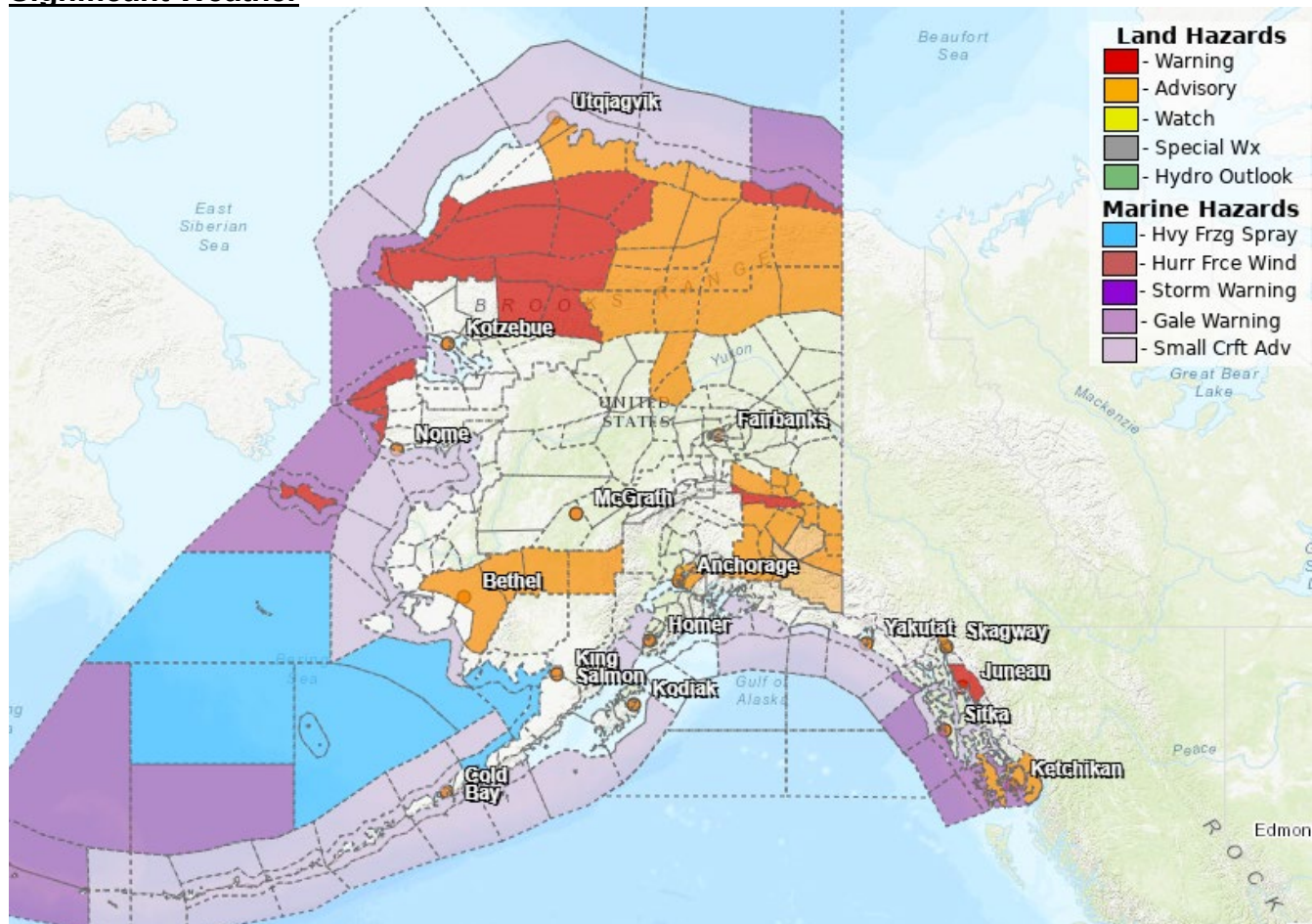
The Alaska Division of Environmental Conservation (ADEC) Spill Prevention and Response page is located at: <https://dec.alaska.gov/spar/ppr/spill-information/response/>

Alaska Cyber Security Information:

State Employees may sign up for cybersecurity notifications and alerts at:

<https://oit-int.alaska.gov/security/>

Significant Weather



Cold Weather Advisory:

Dalton Highway Summit, South Slopes Of The Eastern Brooks Range, Romanzof Mountains, South Slopes Of The Central Brooks Range, Northern Arctic Coast; Central Beaufort Sea Coast; Eastern Beaufort Sea Coast; Central Arctic Plains:
IN EFFECT UNTIL 3 PM TUESDAY

Kuskokwim Valley West; Kuskokwim Valley East; Lime Village; Interior Kuskokwim Delta:

IN EFFECT FROM 3 AM TUESDAY TO 9 AM THURSDAY

Extreme Cold Warning:

South Slopes of the Western Brooks Range, Western Arctic Plains, Howard Pass and the Delong Mountains:

IN EFFECT FROM 9 PM THIS EVENING TO 3 PM WEDNESDAY

High Wind Warning:

Western Arctic Coast

IN EFFECT FROM 9 PM THIS EVENING TO 9 AM THURSDAY

Shishmaref; Bering Strait Coast; St Lawrence Island:

IN EFFECT UNTIL 3 PM WEDNESDAY

Blizzard Warning:

Eastern Beaufort Sea Coast:

IN EFFECT UNTIL 6 PM THIS EVENING

Winter Storm Watch:

Dalton Highway Summits:

IN EFFECT FROM LATE TONIGHT THROUGH WEDNESDAY AFTERNOON

Winter Storm Warning:

Eastern Alaska Range South of Trims Camp:

IN EFFECT FROM NOON TUESDAY TO 3 AM WEDNESDAY

City and Borough of Juneau:

IN EFFECT UNTIL NOON TODAY

Winter Weather Advisory:

Municipality of Skagway, Northern Copper Valley; Western Copper Valley; Central Copper Valley; Ernestine; Southern Copper Valley; Tok Cutoff; McCarthy, Upper Tanana Valley,

IN EFFECT UNTIL 3 PM TUESDAY

Anchorage; Anchorage Hillside / Eagle River; Lower Matanuska Valley:

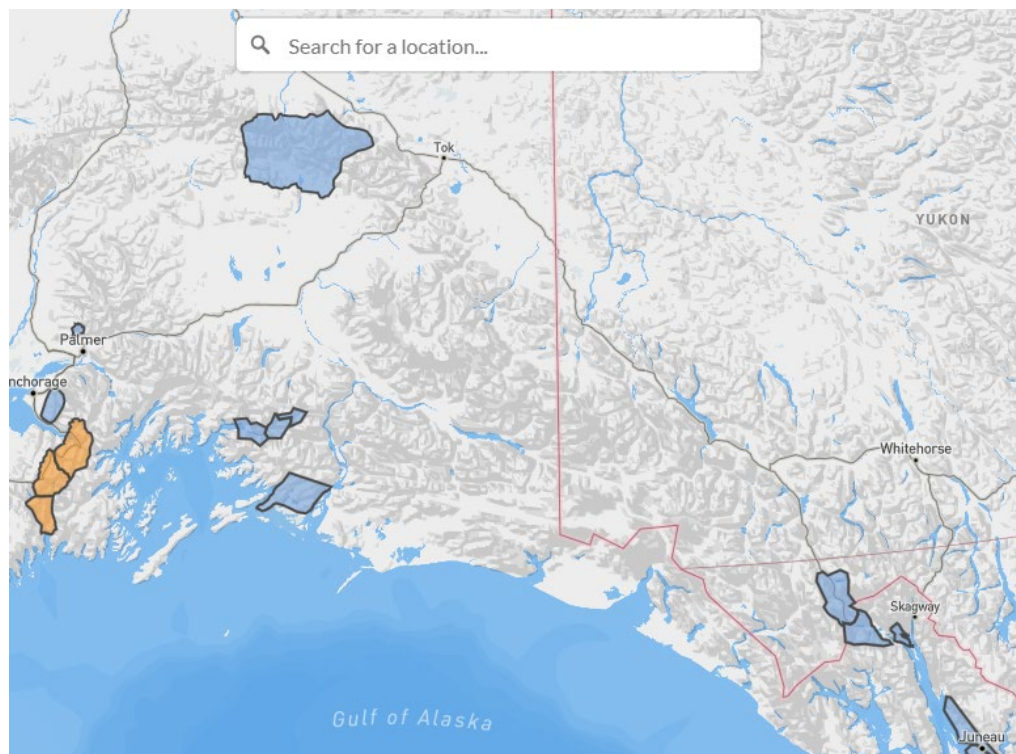
IN EFFECT UNTIL NOON TODAY

Eastern Alaska Range North of Trims Camp:

IN EFFECT FROM 9 PM THIS EVENING TO 3 AM WEDNESDAY

For more information, go to <https://www.weather.gov/arh>

Avalanche Conditions:



Hatcher Pass – Low below 2500', Moderate above 2500'

Chugach State Park – No rating

Turnagain Pass and Girdwood – Considerable at all elevations

Summit Lake – Considerable at all elevations

Seward and Lost Lake – Considerable at all elevations

Maritime – No rating

Intermountain – No rating

Continental – No rating

Haines: Chilkat Pass, Transitional, Lutak – High at all elevations

Juneau: Douglas Island – No rating

Chilkat Pass – No rating

Transitional – No rating

Lutak – No rating

For more information and the most current avalanche conditions, go to <https://alaskasnow.org>

The Next Situation Report will be on **January 27, 2026**. A significant change in situation or threat level will prompt an interim report. This report is posted on the internet at <https://ready.alaska.gov/sitrep>.

To register for email distribution, go to: <http://list.state.ak.us/mailman/listinfo/dhsem.situation.report>. Direct questions regarding this report to the SEOC at 907-428-7100 or seoc@alaska.gov.